

Strengthening Germplasm Management in SSA

**Regional platforms for safe and
efficient exchange and maintenance
of germplasm**

Progress in the SSPs striving towards ISO 17025 implementation [Segundo Fuentes]

		Date						
Country /Place		January 2010	April-May 2010	December 2010	July 2011	January 2012	Others 2011/2012	February 2013
Kenya/ Nairobi	Capacity strengthening	(Facilities assessment)	NCM-ELISA, indexing (grafting), symptomatology	NCM-ELISA standarization	NCM-ELISA, PCR	Mock auditing OPs reviewed	Uploading documentation (CVs, TRs, WFs, Organigram) Lab codes for	Preparation of CVs, TRs, WFs, SOPs, equipment list Clearance of some NC from the mock audit 2012 H. Makena trained 6 months by R. Gatimu
	Facilities	PQS greenhouses				New grennhouse		Indexing will be done in the SASHA greenhouse (temperature controlled)
	Equipments	PQS equipments					Bar coding (in vitro lab and Virology lab)	Hobos data logger are required
Mozambique / Maputo	Capacity strengthening	NCM-ELISA, indexing (grafting), symptomatology	NCM-ELISA Survey	NCM-ELISA, indexing (grafting)	PCR	Mock auditing		Preparation of CVs, TRs, WFs, SOPs, equipment list Clearance of some NC from the mock audiy 2012
	Facilities	Greenhouses (2)						Calibration of some equipments
	Equipments	Shaker, vaccum pump, growth chamber IIAM equipments						Hobos data logger are required
Ghana / Kumasi	Capacity strengthening			NCM-ELISA, indexing (grafting), symptomatology		NCM-ELISA, indexing (grafting), symptomatology, PCR Mock auditing		Preparation of CVs, TRs, WFs, SOPs, equipment list Clearance of some NC from the mock audiy 2012
	Facilities			Greenhouse (1)				
	Equipments			CRI equipments				Hobos data logger are required
CV = Curriculum vitae		TR = Training record		WF = Workflow		NC = non-conformance		

Capacity strengthening



Progress in the SSPs striving towards ISO 17025 implementation. KEPHIS, March 2014



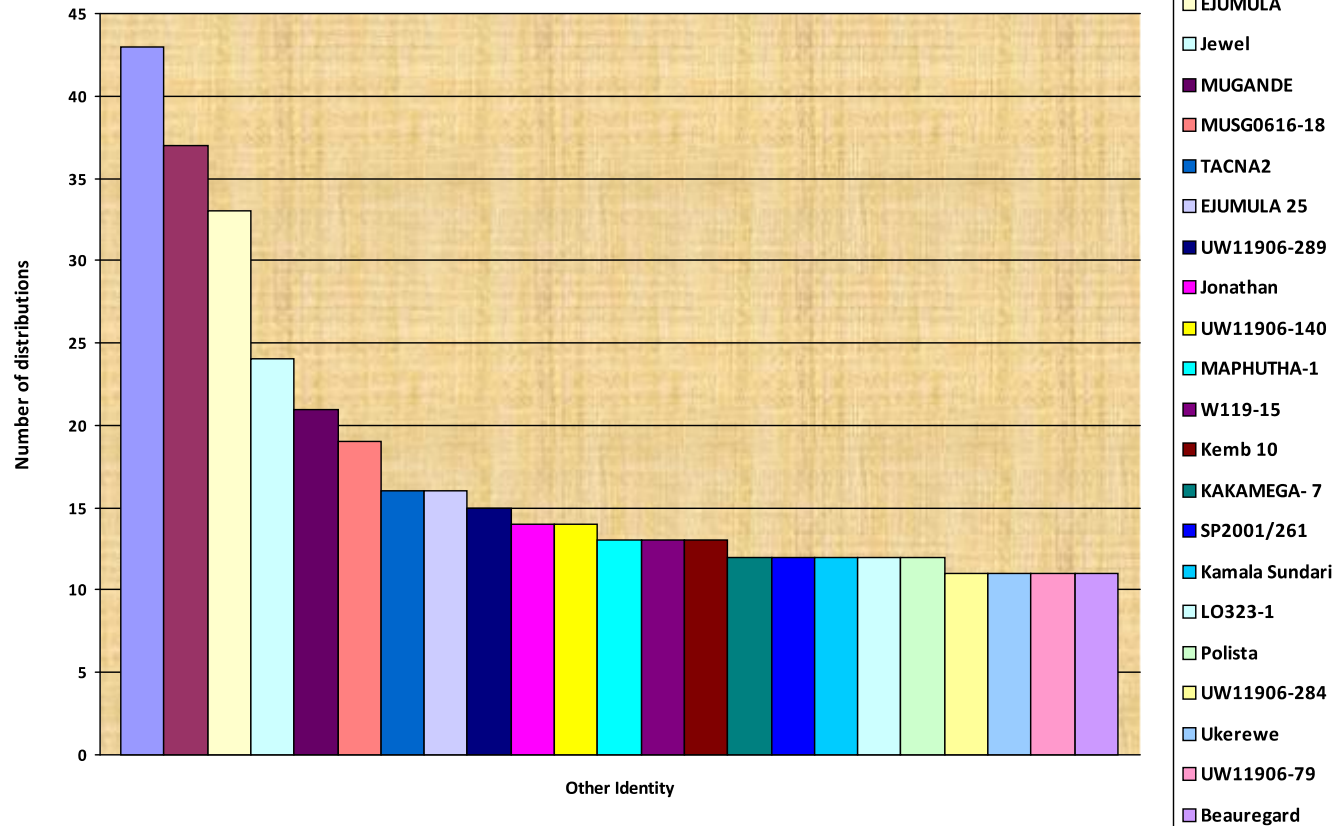
Best bet germplasm set



Name	Release Name	CIP No.	Comments
199062.1		199062.1	Light OFSP; released in Ghana
BEAUREGARD		440132	Commercial US OFSP
CEMSA74-228		400004	High yield from Cuba; release in Ghana
CEMSA78-326		400005	Cuban var
EJUMULA		443751	OFSP from Uganda; released in Moz
EJUMULA 25	Cecilia	106766	New OFSP from Mozambique
JEWEL		440031	Old US OFSP
JONATHAN		420014	Old Peruvian var OFSP
KAMALA SUNDARI	Apomuden	440254	OFSP released in Ghana
Kemb 10	Sauti	440169	Yellow flesh, widely grown in E&S Africa
Kemb 37		440170	Red skinned, white flesh from Kenya
LO323-1		106767	New OFSP from Mozambique
MAPHUTHA-1		106768	New OFSP from Mozambique
MOHC		440034	Light OFSP from Burundi; released in Ghana
Mugande		440163	Red skin, white flesh vare from Rwanda
MUSG0603-02	Esther	106770	New OFSP from Mozambique
MUSG0616-18	Tio Joe	106769	New OFSP from Mozambique
NKA 1081 L	Tomulabula	100201	Farmer participatory var Uganda
SPK 004/6	Vita	100200.3	OFSP Uganda
SPK 004/6/6	Kabode	100200.4	OFSP Uganda
TACNA2	Ininda	106765	New OFSP from Mozambique
UW11906-140	Lourdes	106763.006	New OFSP from Mozambique
UW11906-289	Sumaia	106763.004	New OFSP from Mozambique
UW11906-79	Bela	106763.005	New OFSP from Mozambique
UWII906-175	Namanga	106763.003	New OFSP from Mozambique
W119-15	Melinda	106763.001	New OFSP from Mozambique

CIP Kenya (PQS) Germplasm Distribution during SASHA 1

Top 20 Accessions by Distribution 2010-2013



To do:

- Identity verification of germplasm to be distributed
 - DNA fingerprinting underway for 104 genotypes
 - Routine morphological characterization and documentation need to be routine
- System for documentation still requires much improvement
 - Should be able to draw on and integrate with the Lima database, but hasn't yet happened
- Welcome involvement of CIP gene bank to develop a strategy for conservation of African landrace germplasm