



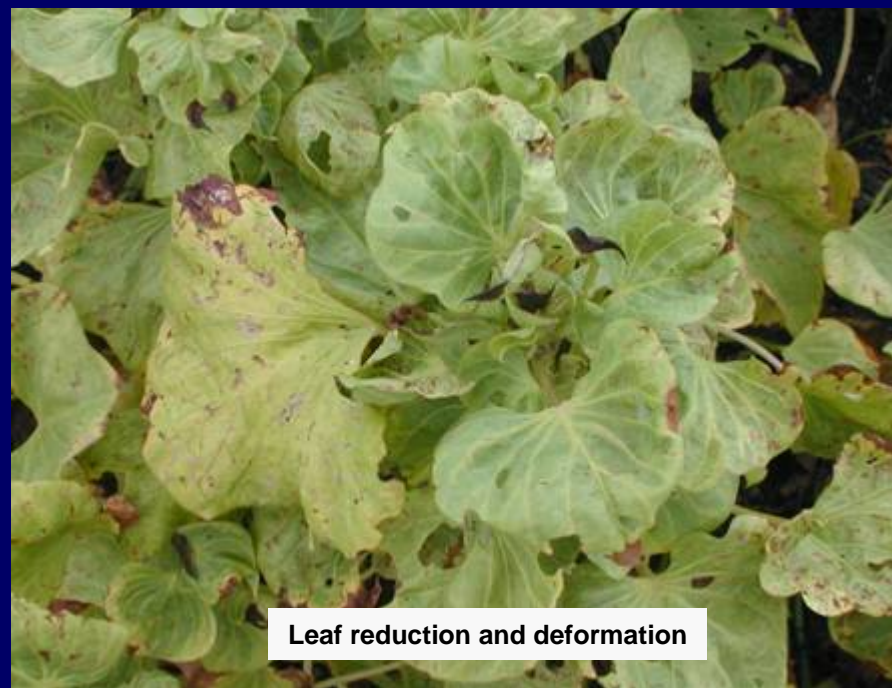
Symptoms on SP induced by virus infection

Segundo Fuentes



Apparently healthy

Infected (chlorosis,
stunting, leaf reduction and
deformation)



Leaf reduction and deformation



Leaf curl / Roll up

Chlorotic spots and purple rings





Roll down



Vein clearing



Chlorotic spots



Chlorotic rings



Vein clearing



Chlorotic spots



Purple rings

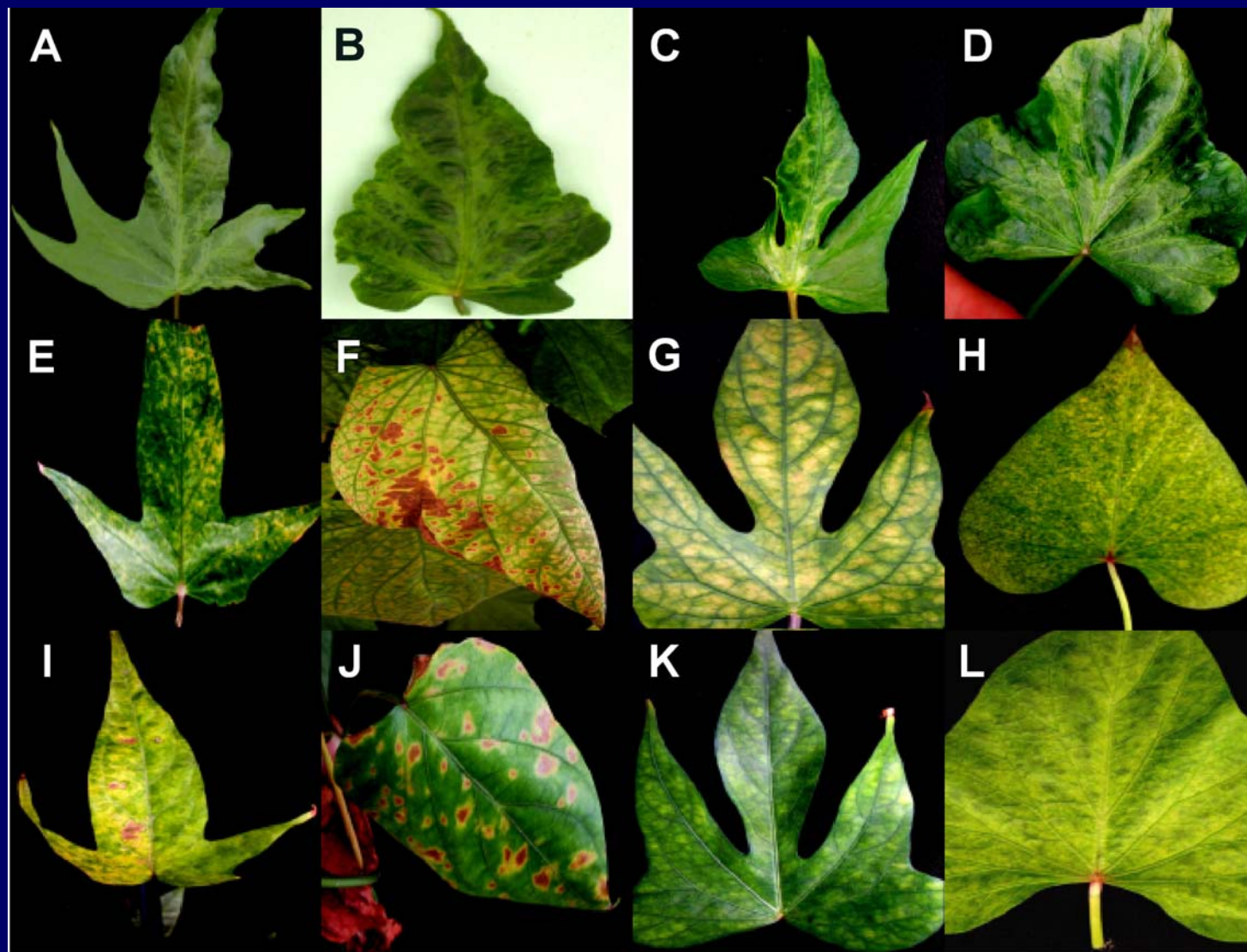


Mosaic



Mosaic, leaf reduction, leaf deformation, stunting

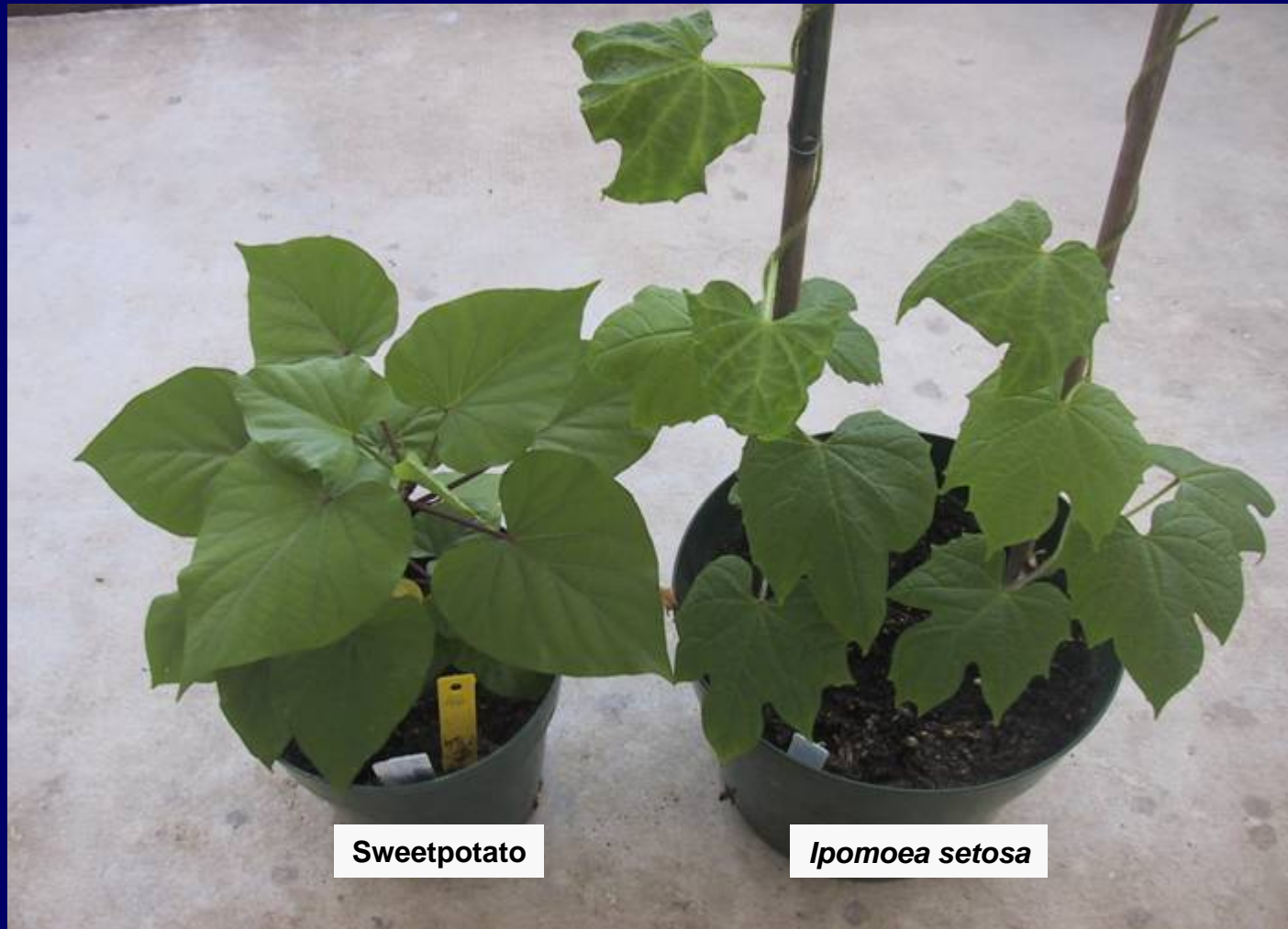




**Mosaic,
Rugosity**

**Necrotic
spot, leaf
necrosis**

Symptomless infection



- Low virus concentration in sweetpotato tissues (virus is not detected by serology from the SP plant)

Recording symptoms

C = Chlorosis

Pr = Purple rings

Cs = Chlorotic spots

R = Rugosity

Cp = Chlorotic point

RD = Roll down

IVC = Interveinal chlorosis

RU = Roll up

Ld = Leaf deformation

St = Stunting

Ln = Leaf necrosis

Vb = Vein banding

Lr = Leaf reduction

Vc = Vein clearing

M = Mosaic

Vn = Vein necrosis

Np = Necrotic points



Vc



Cs



Cr



Vc, Cr



M, Vc



M, Ld



M, Ld, Lr, St



RD



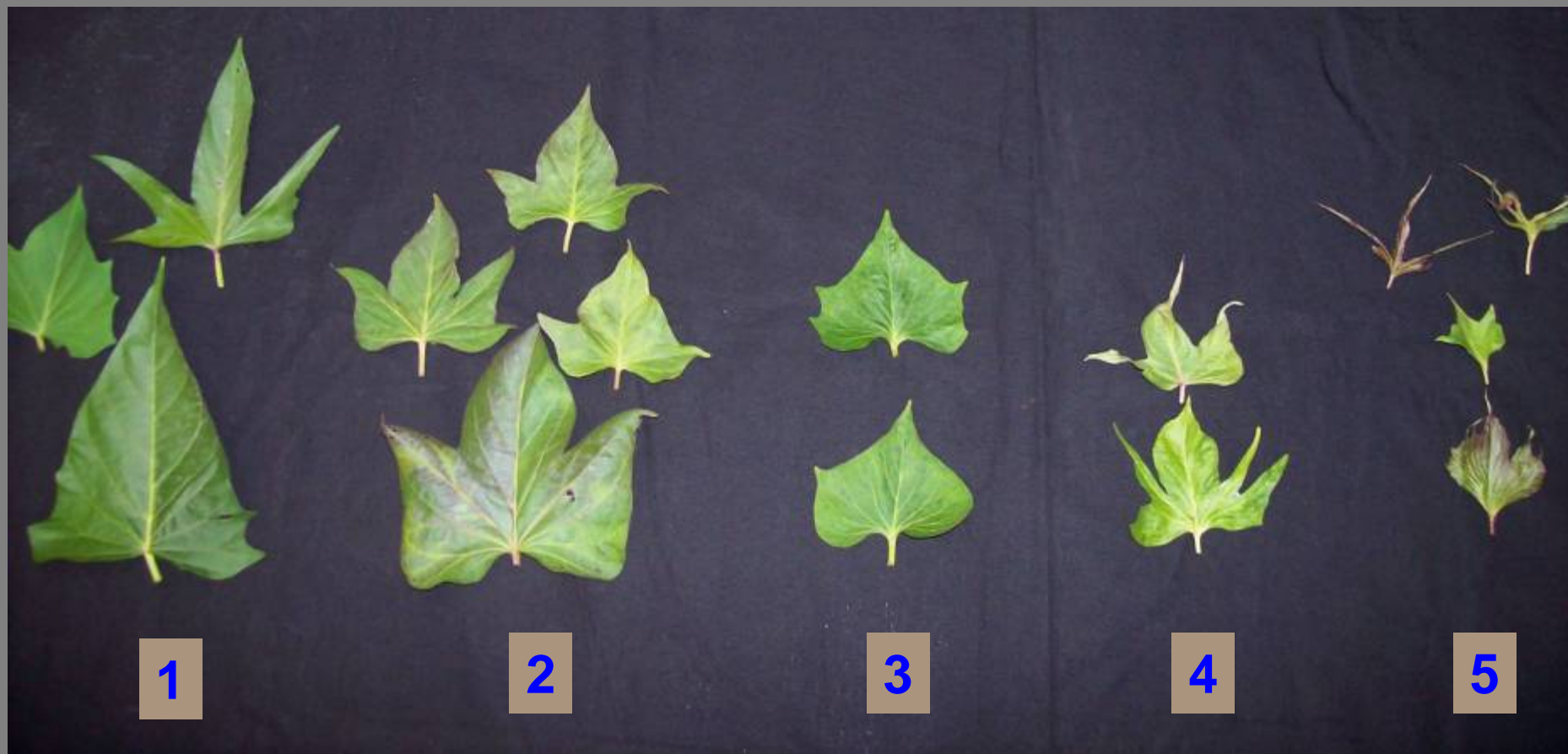
Aiyura (SP germplasm, Feb. 23, 2007)



Aiyura (SP germplasm, Feb. 23, 2007)



Sweetpotato virus disease (SPVD)



Disease scale



1



2



3



4



A photograph of a plant, likely a sweet potato, showing a cluster of leaves. Most leaves are green, but several are variegated with yellow and white patches, demonstrating somatic mutation. The text "Somatic mutation" is overlaid in red.

Somatic mutation

Somatic mutation



Clone CIP 440029 (Feng Shou Bai) showing somatic mutation (symptom of genetic distortion of leaves).



Indicator plant *I. seotsa* grafted with tissue scion from clone CIP 440029. No symptom is observed.

Somatic mutation



Clone CIP 401430 (Morada) showing somatic mutation (symptom of genetic distortion of leaves).



Indicator plant *I. seotsa* grafted with tissue scion from clone CIP 401430. No symptom is observed.