

MLE CoP 1 Year After:

Update on the Progress



Julius Okello

Presentation made at MLE CoP Annual Meeting, Kigali, Rwanda

April 27-29, 2016

Purpose of MLE CoP

- Share experiences, knowledge and skills
- Identify ways of tackling challenges
- **GET BETTER TOGETHER**
 - At generating & documenting the evidence base



VISION



Update

Who we are...



March 2015 = 16

Participants drawn from
5 different orgs

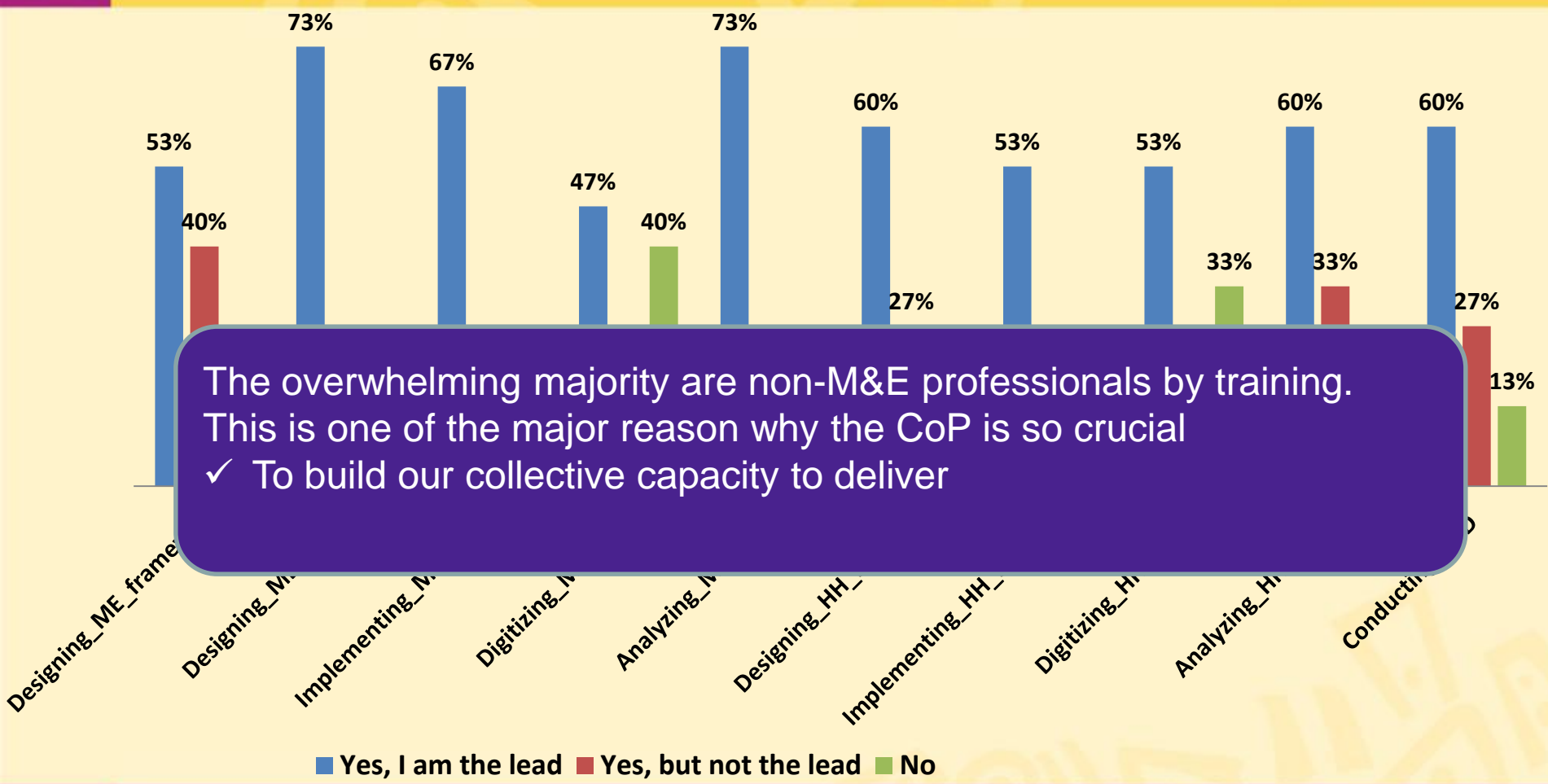
Now we're 35,
and growing..

Who we are ...disciplinary areas



- When we started:
 - Agricultural Economics - (47%)
 - International Development - (13%)
 - Agribusiness - (13%)
 - Marketing; Animal breeding; Computer Science
 - Biometrics & project planning
- Added (NEW):
 - Value chain
 - Gender
 - M&E
 - Public health
 - Agronomist

Current responsibility includes...



The overwhelming majority are non-M&E professionals by training. This is one of the major reason why the CoP is so crucial
✓ To build our collective capacity to deliver

■ Yes, I am the lead ■ Yes, but not the lead ■ No

What we have done so far?



- Three active discussions:
 - Survey data collection: Pay or not pay?
 - Defining an indirect beneficiary
 - Yield estimation
- And one abortive topic –data from vc actors
- Conducted successful mapping of 568 vine multipliers in 9 SSA countries

Some consensuses...

Direct beneficiary [FtF]

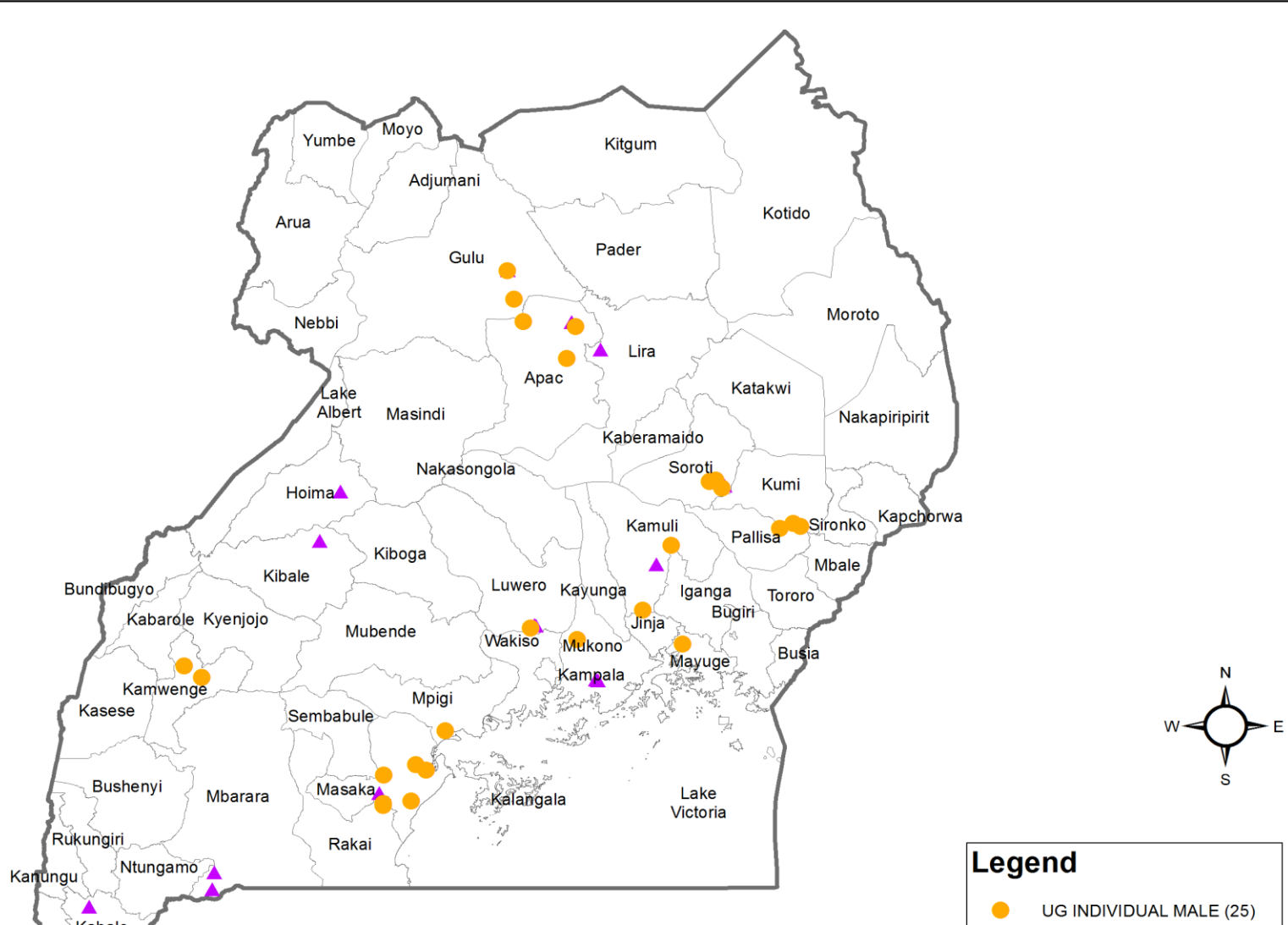
A HH that comes into direct contact with the set of interventions (goods or services) provided by the activity/project through the project or its implementing mechanism (IM)/partners.

Indirect beneficiary [FtF]

HH that does not have direct contact with *IM* but still benefits, e.g.,:

- ✓ Neighbor who sees the results of an improved technology applied by direct beneficiaries and decides to apply the technology.
- ✓ HH that hears a radio message but doesn't receive any other training or counseling from the activity.

UGANDA VINE MULTIPLIERS - 2015



Thanks!!!