

MLE CoP

Update on the Progress



Julius Okello & Ibrahim Koara
Presentation made at MLE CoP Annual
Meeting, Nairobi, Kenya
February 12, 2018

Purpose of MLE CoP

- Share experiences, knowledge and skills
- Identify harmonized approaches/methods for MEAL
- **GET BETTER TOGETHER**
 - Improve our capacity for EBM



RALLYING VISION



Update

Who we are...

February 2017



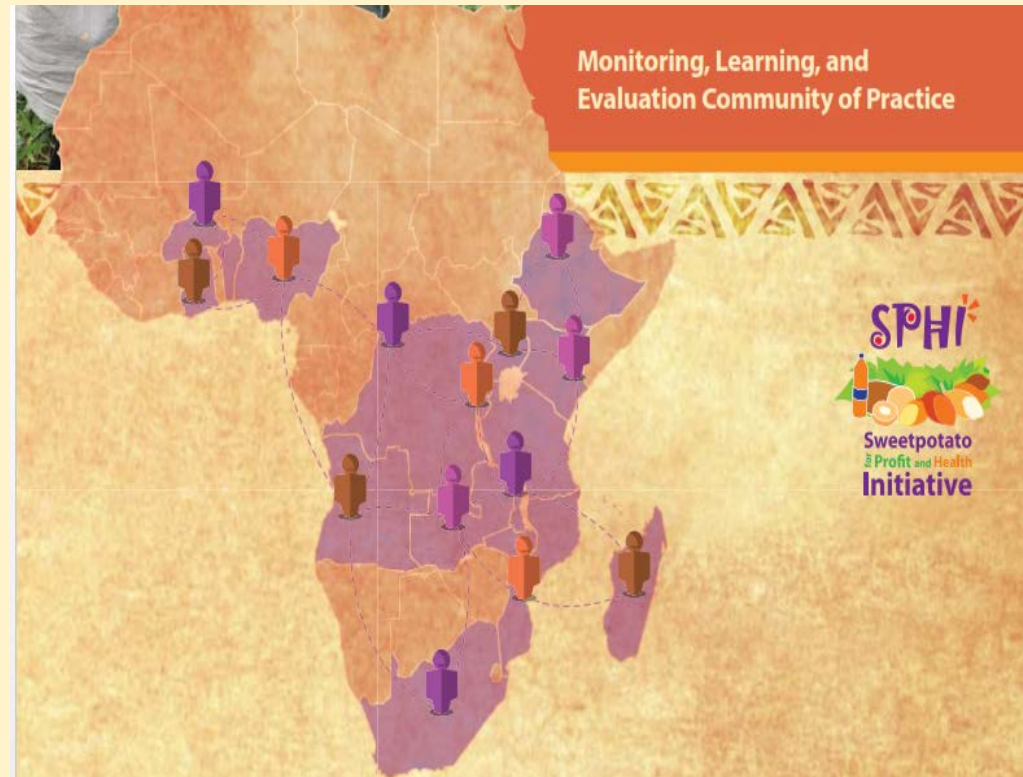
March 2015

Who we are ... Diverse

Disciplinary areas

- Agricultural Economics
- Int'l development
- M&E
- Agribusiness/marketing
- Animal breeding
- Computer science
- Biometrics
- Project planning
- Value chain
- Gender
- Public health
- Agronomist

Geographical placement



Organizational diversity



2017 online discussions



Summaries in your folder

Summary of discussion topic # 1: Defining a vine/seed Multiplier

Introduction and discussion questions

Summary of discussion topic #2: Monitoring data collection – Paper or Tablet

Introduction and discussion questions

Summary of discussion topic #3: Monitoring Adoption on a Small Budget- Revisited

Introduction and discussion questions

Mini topic: Behavioral sciences

- Inspired by : Nobel 2017 in Economics awarded to Richard H. Thaler



- It is one of the interesting subject area for adoption, economic decision making and impact assessment.

2017 SPHI update report



Sweetpotato for Profit and Health Initiative

Status of Sweetpotato in Sub-Saharan Africa

September 2017

Julius Okello, Norman Kwikiriza, Luka Wanjohi, Jan Low and Pieter Wauters

International Potato Center

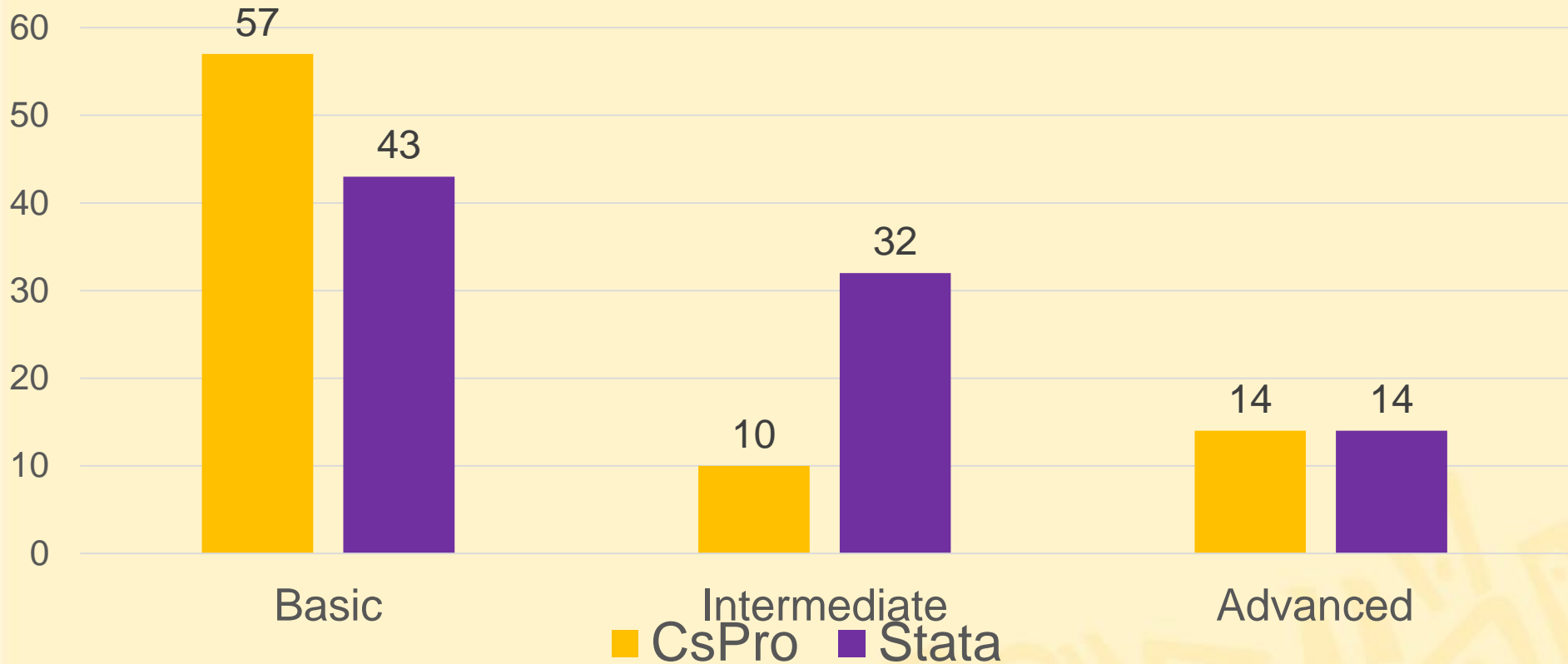


Presented in SPHI plenary

Just ahead this year ...



Knowledge of statistical software, 2017 (% , N=28)



Agenda

Stata Short Course on Cross-Sectional Analysis of Survey and Monitoring Data

Ndama Lounge, ILRI Campus, Nairobi

Margaret Beaver & Srinivasulu Rajendran

February 13-18, 2018

It's a great bargain!



STATA 14 - SAMPLE SESSION

**Survey Data Cleaning Guidelines:
(SPSS and Stata). 1st Edition**

by

Margaret Beaver

Cross-Sectional Analysis



**Short Course Training Materials
Designing Policy Relevant Research and
Data Processing and Analysis with STATA 14 for Windows*
1st Edition**

Margaret Beaver

**Department of Agricultural, Food, and Resource Economics
Department of Economics
MICHIGAN STATE UNIVERSITY
East Lansing, Michigan 48824**

Thanks!!!