

Luka Wanjohi and Jens Riis-Jacobsen, CIP-SSA, Nairobi, July 14, 2011

About this guide

This is an advanced setup guide for RExcel. This guide describes advanced methods for **installing** and **uninstalling** *RExcel*. The methods described here should be used as a last result or by advanced R users.

Who Should read this guide?

- 1.) An advanced R user who does **NOT** want to uninstall his *R* installation so as to use the automated installer on the portal
- 2.) A user who is unable to uninstall an existing *RExcel* installation so as to use the automated installer on the portal. This guide describes an advanced Uninstallation method for *RExcel*.

As much as possible, stick to using the automated installer for RExcel found at <http://sweetpotatoknowledge.org/germplasm/research-methods/cloneselector2-0/R-with-rcom-rscproxy-rexcel-installer.zip/view> and only result to this guide when you must.

ADVANCED INSTALLATION OF REXCEL

An automated installer for R and RExcel can be downloaded from <http://sweetpotatoknowledge.org/germplasm/research-methods/cloneselector2-0/R-with-rcom-rscproxy-rexcel-installer.zip/view>. That is what you should always use.

However, some advanced R users may prefer installing RExcel only to work with their existing R installations. This guide takes you through advanced methods of installing RExcel.

Good Internet or copy of RandFriends and some Internet available: Easiest option is using RandFriends

Note: This is a download of 280 Mb, and may take a long time.

Note also: **The computer must have Internet connection** when doing the install or else the install will fail.

Go to:

<http://rcom.univie.ac.at/download.html#RAndFriends>

and click on Download **RAndFriendsSetup2122V3.1-13-1-64inc** . Note the version number may have changed a little.

Simply follow default installation.

No Internet: Install R, required components, and RExcel individually, but it is a bit complicated

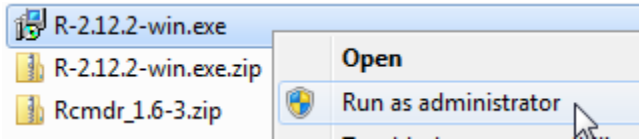
To do this you must obtain a copy of all the R and RExcel files e.g. on USB stick, CD, or similar. The files required are:

1. R-2.12.2-win.exe
2. statconnDCOM.latest.exe
3. rcom_2.2-3.1.zip
4. rscproxy_1.3-1.zip
5. RExcelInst.latest.exe

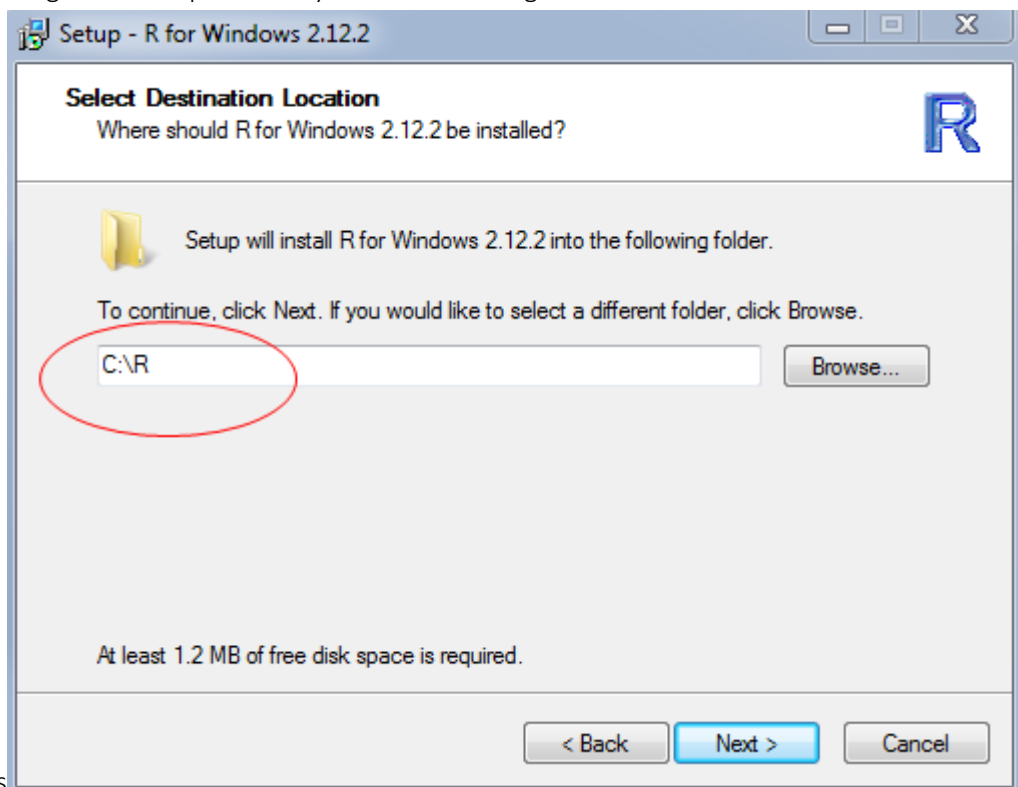
Note: You will need the Administrative privileges to your computer to do this process.

Step 1 Install R

1. Unzip R-2.12.2-win.exe.zip
2. Run R-2.12.2-win.exe as Administrator (You right-click on file and choose Run as Administrator)



3. Accept the default installation options until the **Select Destination Location**, here you must change the location to **C:\R**. This is important as Windows security will prevent you from installing other components if you leave it in Program



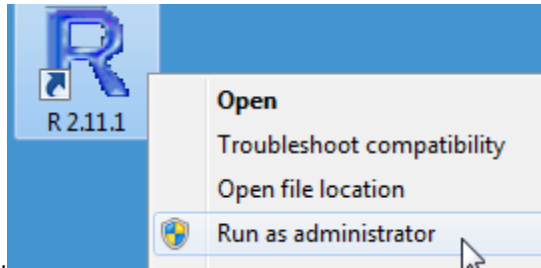
4. Accept the default for the rest of the installation

Step 2: Install rscproxy and rcom

To do this step you must **Run R as Administrator**. See step 1 for running as Administrator. Verify that R has not been installed inside Program files in step 1 as this may cause problems.

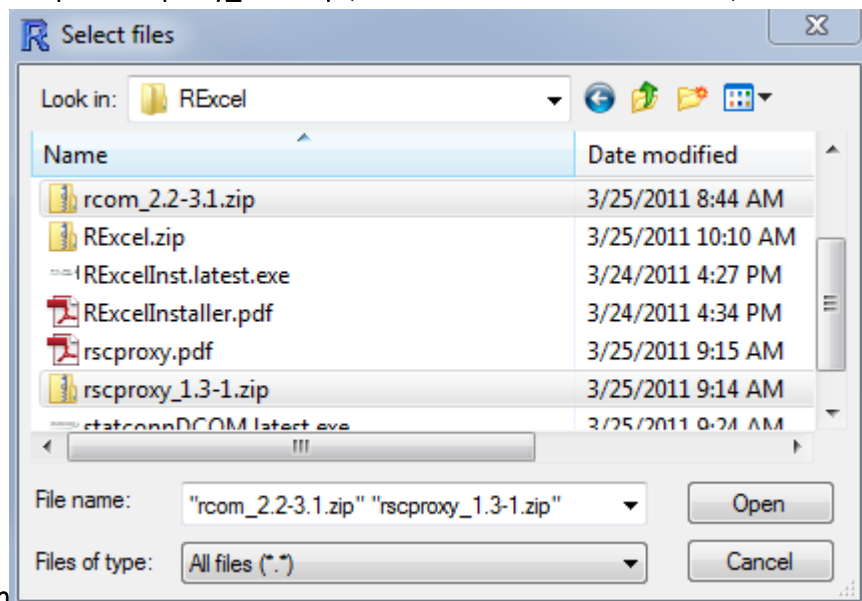
1. Download from the SweetpotatoKnowledge portal the **RExcel.zip** file, and unzip this on your computer.

2. **Right-click on the R icon** on the desktop and choose **Run as Administrator** . You will be asked to give permission for program to make changes, Click



Yes.

3. In the R window Click Packages menu, and select the menu Install package(s) from local zip files....
4. In the **Select files dialog** navigate to the location where you **unzipped RExcel folder**, and select the zip files **rcom_2.2-3.1.zip** and **rscproxy_1.3-1.zip** (use Ctrl+click for the second file). With both files



selected Click **Open**

5. In the R Console you should see the messages: Package: 'rcom' successfully unpacked.... And package 'rscproxy' successfully unpacked.... If you get a warning, you are probably not running R as administrator or you have installed it in Program Files and windows may have blocked the install.
6. You must now Register the rcom in Windows: to do this enter in the R Console the commands and press Enter after each command:

```
library(rcom)
comRegisterServer()
comRegisterRegistry()
```

7. **Exit RGui**, and Click **No** when asked to Save workspace image

Step 3: Install statsconnDCOM

1. In Windows Explorer **double-click on statconnDCOM.latest.exe** (you may not see the exe extension)
2. **Click Yes** to allow to make changes
3. **Accept License agreement**
4. In **Select Destination Location** make sure to change the Program Files to R i.e. location should be **C:\R\statconn\DCOM**
5. Accept default installation in next dialogs, and in Ready to install **Click Install**
6. You should end up with a dialog **Completing the statconnDCOM Setup Wizard**, and **Click Finish**

Step 4: Install RExcel

1. In Windows Explorer **double-click on RExcelInst.latest.exe** (you may not see the exe extension)
2. **Click Yes** to allow changes
3. **Accept License agreement**
4. In **Select Destination Location** make sure to change the Program Files to R i.e. location should be **C:\R\RExcel**
5. Accept default installation in next dialogs, and in Ready to install **Click Install**
6. You may now get a dialog about R version, **Click OK**
7. You will also get a dialog about Excel being hidden during install, **Click OK**
8. And you will get a dialog about multiple users of Excel, **Click OK**
9. And you will get a dialog about Help in RExcel, **Click OK**
10. You should end up with a dialog **Completing the RExcel Setup Wizard**, and **Click Finish**

Step 5: Check RExcel working

1. Start **Excel**
2. **Click on Add-Ins** (Excel 2007). In Excel 2003 you have a separate RExcel menu
3. **Click RExcel** drop down
4. Click **Start R**
5. After a while click RExcel again and you should now **see almost all menus active**

You are now ready to run your analysis in CloneSelector

RExcel requires R and a number of components to be in place for RExcel to work, and these have to be of versions that are compatible. If R is already installed or if RExcel is installed, but not working, then the easiest is often to do a complete uninstall of R and all RExcel components and the reinstall all the components with an automatic installer that ensures that all components are compatible. If the automatic uninstallers do not work or does not complete the uninstall then you will need the procedures in this manual.

Advanced Uninstallation of R and RExcel

Sometimes uninstalling R and related components is not always a straight forward affair. There are times when the uninstaller does not run at all, or when it leaves components or entries in the Windows Registry behind, which in turn causes problem when trying to reinstall.

This section describes an advanced method of uninstalling R. If you installed R using the *RAndFriendsSetup*, please see the next section *Advanced Uninstallation of a version of R from RAndFriendsSetup* below for specific instructions on advanced uninstallation of that particular version of R.

Step 1

Close all running instances of *R* and *MS Excel*.

Step 2

Run the uninstallers for all the add-on components for *R* e.g. *StatconnDCOM* and *RExcel*. These normally run without any problem but should you encounter any error then navigate to the directory where the component was installed and manually delete the components' root directly completely.

Step 3

Navigate to the root directory with *R*'s installation and delete it completely. You may receive a warning depending on the installation location, and sometimes you may be required to authorize changes.

Step 4

Now run the Uninstaller for *R* from the Uninstall Programs Window. Windows will detect that the files no longer exist and will give you an option to remove R from the listed programs. Click **Yes**.

Step 5

Now you need to manually delete all instances of *R* and *RExcel* components from the registry. Click on *Start>All Programs>Accessories>Run*. Type **regedit** and click **Ok**

Click Yes to allow changes. Lookup and delete the following keys if they exist:

HKEY_LOCAL_MACHINE\Software\R-core\R\Current Version
HKEY_LOCAL_MACHINE\Software\R-core\R\[version]\InstallPath
HKEY_CURRENT_USER\Software\R-core\R\Current Version
HKEY_CURRENT_USER\Software\R-core\R\[version]\InstallPath
HKEY_CLASSES_ROOT\.RData
HKEY_CLASSES_ROOT\RWorkspace

Step 6

Click Edit>Find

Type *RExcel* and click on *Find*. For every registry entry related to *RExcel*, delete completely. Press *F3* to find the next entry, until you are done searching the whole registry. It's a slightly tedious process, but *RExcel* registry entries left by an old installation can cause a lot of problems.

Step 7

You have successfully uninstalled *R* and *RExcel*. You should now try to run the combined installer for *R/RCOM/RSCPROX/REXCEL*. You can get it from

<http://sweetpotatoknowledge.org/germplasm/research-methods/cloneselector2-0/R-with-rcom-rscproxy-rexcel-installer.zip/view>

Advanced Uninstallation of a version of R from RAndFriendsSetup

There is a known issue with the uninstaller for *R 2.10.0* installed by *RAndFriendsSetup2120-V3.1.1-1.exe*.

For users running a 32bit version of windows, create a file called *runinst32.reg* and paste the content below:

```
Windows Registry Editor Version 5.00
; runinst32.reg
; Removes the entries of an uninstalleable R 2.12.0 installation
; on 32bit Windows

[HKEY_LOCAL_MACHINE\SOFTWARE\R-core\R]
"InstallPath"=-
"Current Version"=-
[HKEY_LOCAL_MACHINE\SOFTWARE\R-core\R32]
"InstallPath"=-
"Current Version"=-

[-HKEY_LOCAL_MACHINE\SOFTWARE\R-core\R64]

[-HKEY_LOCAL_MACHINE\SOFTWARE\R-core\R\2.12.0 beta]
[-HKEY_LOCAL_MACHINE\SOFTWARE\R-core\R\2.12.0]

[-HKEY_LOCAL_MACHINE\SOFTWARE\R-core\R32\2.12.0 beta]
[-HKEY_LOCAL_MACHINE\SOFTWARE\R-core\R32\2.12.0]

[-HKEY_LOCAL_MACHINE\SOFTWARE\Microsoft\Windows\CurrentVersion\Uninstall\R for Windows
2.12.0 beta_is1]
[-HKEY_LOCAL_MACHINE\SOFTWARE\Microsoft\Windows\CurrentVersion\Uninstall\R for Windows
2.12.0_is1]
```

While logged in as the administrator:

1. Double click *runinst32.reg*
2. Allow changes in the registry
3. Delete the directory *C:\Program files\R\R-2.12.0* completely. (The location of this directory may vary depending on the original install location)
4. You have successfully uninstalled *R* and *RExcel*. You should now try to run the combined installer for *R/RCOM/RSCPROX/REXCEL*. You can get it from <http://sweetpotatoknowledge.org/germplasm/research-methods/cloneselector2-0/R-with-rcom-rscproxy-rexcel-installer.zip/view>

For a 64bit version of windows, create a file called *runinst64.reg* and paste the content below:

```
Windows Registry Editor Version 5.00
; runinst64.reg
; Removes the entries of an uninstalleable R 2.12.0 installation
; on 64bit Windows

[HKEY_LOCAL_MACHINE\SOFTWARE\R-core\R]
"InstallPath"=-
"Current Version"=-
[HKEY_LOCAL_MACHINE\SOFTWARE\R-core\R32]
"InstallPath"=-
"Current Version"=-
[HKEY_LOCAL_MACHINE\SOFTWARE\R-core\R64]
"InstallPath"=-
"Current Version"=-

[-HKEY_LOCAL_MACHINE\SOFTWARE\R-core\R\2.12.0 beta]
[-HKEY_LOCAL_MACHINE\SOFTWARE\R-core\R\2.12.0]

[-HKEY_LOCAL_MACHINE\SOFTWARE\R-core\R32\2.12.0 beta]
[-HKEY_LOCAL_MACHINE\SOFTWARE\R-core\R32\2.12.0]

[-HKEY_LOCAL_MACHINE\SOFTWARE\R-core\R64\2.12.0 beta]
[-HKEY_LOCAL_MACHINE\SOFTWARE\R-core\R64\2.12.0]

[-HKEY_LOCAL_MACHINE\SOFTWARE\Microsoft\Windows\CurrentVersion\Uninstall\R for Windows
2.12.0 beta_is1]
[-HKEY_LOCAL_MACHINE\SOFTWARE\Microsoft\Windows\CurrentVersion\Uninstall\R for Windows
2.12.0_is1]
```

While logged in as the administrator:

1. Double click *runinst32.reg*
2. Allow changes in the registry
3. Delete the directory *C:\Program files\R\R-2.12.0* completely. (The location of this directory may vary depending on the original install location)
4. You have successfully uninstalled *R* and *RExcel*. You should now try to run the combined installer for *R/RCOM/RSCPROX/REXCEL*. You can get it from <http://sweetpotatoknowledge.org/germplasm/research-methods/cloneselector2-0/R-with-rcom-rscproxy-rexcel-installer.zip/view>