

Can the integrated Ag - Nut approach be cost effectively scaled?



HarvestPlus
Better Crops • Better Nutrition

By Sylvia Magezi, HarvestPlus - Uganda

HarvestPlus c/o IFPRI
Plot 15 East Naguru Rd • Kampala • UGANDA
Tel: +256-414-285-060 or -064
HarvestPlus@cgiar.org • www.HarvestPlus.org





Presentation outline

- Agriculture Nutrition components
- HarvestPlus – Uganda scaling experience
 - NGOs
 - Markets
- Scaling through government structures
- Multi-sectoral approach
- Conclusion



Integrated Ag - Nut approach

Has components of:

- Seed access
- Agronomy training
- Nutrition education and communication
- Value addition
- Marketing
- Initially run through NGOs because of the complexity



HarvestPlus experience

- Used this through NGOs extension structure
- Rather intensive and complex approach
- Cost effective “World bank” standards
- Limited coverage (Direct reach)
- BUT new approaches using a market systems approach
- Engage different actors facilitate the process to increase uptake
- Linking to farmers; buyers in both input and output markets & dealing with the bottle necks



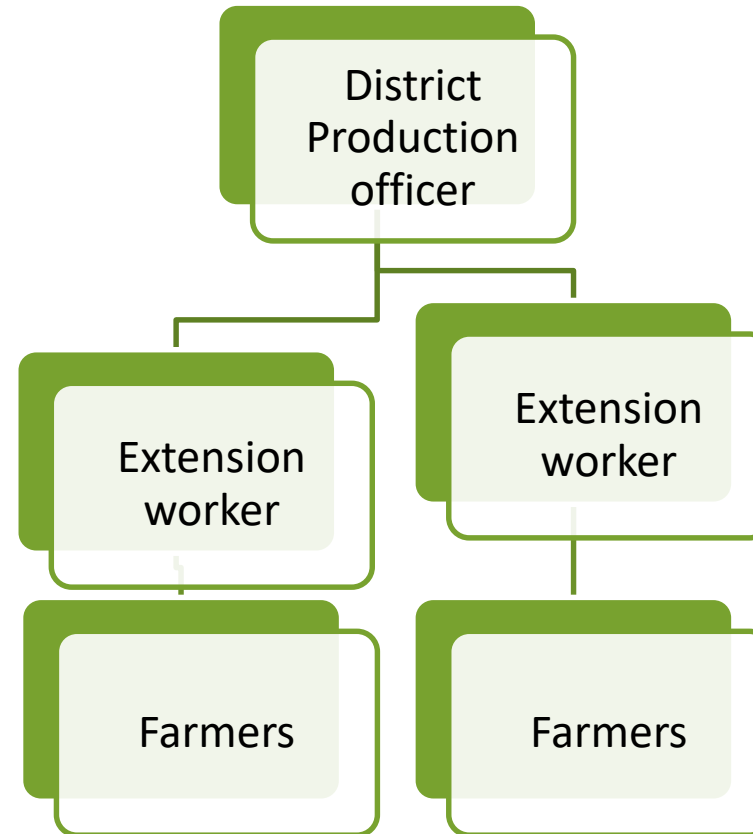
For scaling; - Govt involvement

- Advocacy for policy inclusion & increase uptake
- Done both at national level and district level
- Multi sectoral engagement;
 - MAAIF – Extension worker training, vine inspection, commercialization,
 - MoH – nutrition awareness,
 - MoTIS - Standards organizations
 - MoES – School curriculum and consumption,evolution of the BTWG
- At district level – DNCC similar members
- Becomes part of the national agenda



Agriculture extension system

- Agriculture extension system; incorporating biofortification in training of FEWs
- Incorporating inspection guidelines into seed policy
- Advocacy for inclusion in priority crops esp at district level
- Linking to seed producers/DVM





Health extension structure

- Health extension systems;
- Sensitization of health workers and village health teams about new food crops,
- Have small demo gardens at health centers
- Link to seed producers
- Challenges include keeping demo garden at health center productive





Education system

- Sensitization of teachers, inclusion in school curriculum, and school gardens,
- Establishment of demo /multiplication gardens at school enable pupils to take seed/vines home
- Promoting consumption and linking to producers to support commercialization





Cost effective?

- After the initial costs on training and advocacy, getting biofortified crops into policies, makes it get into the national agenda.
- African proverb“***it's better to run slowly but include every body***”

BUT

- Support commercialization to drive the process further
- Involve private sector for input and output markets – vibrant market
- Get support at district level through nutrition committees & national level through multi-sectoral platforms to fuel the scale up
- Supporting leaders in the system



To answer the question

Can the integrated Ag – Nut approach be scaled?

YES!!



- Special thanks to our donors:



USAID
FROM THE AMERICAN PEOPLE



BILL & MELINDA
GATES *foundation*



Thank you!

